

**FOSSICKERS.COM**



**"If it isn't in your Pyramid Pro Pan®... It just isn't there!" ®**

## Instructions For **PYRAMID PRO PRODUCTION PAN®**

*Hello fellow Fossicker,*

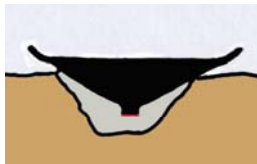
*Congratulations on buying the most efficient production pan in the world. Use your Pyramid Pro Pan® to Prospect, Assay or Produce. Your Pyramid Pro Pan® has been designed to move high volumes of gravel in a very short time and to recover most, if not all heavy materials like gold, platinum and gems for your effort. Your Pyramid Pro Pan® does this kind of work extremely well. Your Pyramid Pro Pan® is designed to be one of the easiest pans to learn and use by either novice or professional alike. The average recovery on the first try is usually 85-95% of the fine gold down to 50/100 mesh. The Pyramid Pro Pan® is incapable of losing large pickers and nuggets.*

*The Pyramid Pro Pan® has been constructed to take the beating that production panning gives. We use a high-density polyethylene plastic for the body construction along with aluminum riffles, which are held by silicon and then riveted down to keep them connected to the body. Additionally the handles for your Pyramid Pro Pan® are built to take the strain put on them by constant use. They also break down for easy storage in a container or backpack with or without the pan body. Last is a quality high pressure plug which if lost can be easily replaced from any Home Depot and/or Lowe's Store or Fossickers\* if you're out in the field. (See below.) Because your Pyramid Pro Pan® is made so well, Fossickers guarantees it for life.*

**Important:** Plastic gold pans must be seasoned before use. Find instructions for '[Seasoning](#)' on website.

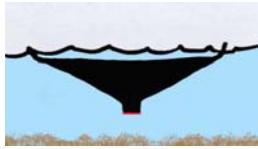
**The following instructions will explain how to properly use your Pyramid Pro Pan® for the maximum results. Do keep this in mind – "If it isn't in your Pyramid Pro Pan®... it just isn't there!" ®**

1. Find a resting spot for your Pyramid Pro Pan®, i.e. between some rocks, a hole dug in the ground or a bucket, etc.

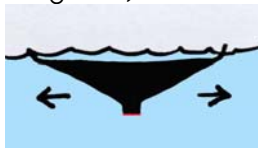


2. Pour some water into your Pyramid Pro Pan®. This will keep the gravel in a more liquefied state, which promotes quicker cleaning, classification, and more gold. Now add the gravel to just below the top riffle.\*\* (See below.)

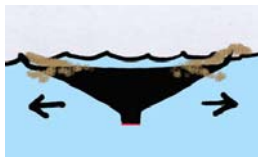
3. Pick up your Pyramid Pro Pan®, get comfortable, (sitting or stooping,) let your elbows rest on your knees. Now place the pan just below the waterline being deep enough to allow the water to enter into the top edge of the pan. \*\*\* (See below.)



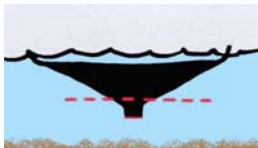
4. Begin moving your Pyramid Pro Pan® in straight quick short left and right movements as if you were trying to sift sand through a strainer. Do not lift the Pyramid Pro Pan® above the waterline or make rocking motions, because these types of movements will not give you the desired result. Do keep it horizontal and just below the waterline. This works best. (See Hints about pre-cleaning the gravel.)



5. When gravel in the surface layer of the Pyramid Pro Pan® appears to move freely as in a liquefied state, begin to increase the left to right stroke as to cause the surface gravel to expel over the top end edge on the long sides while remembering to keep the pan just below the waterline so the water can enter and help wash out the loose gravel.



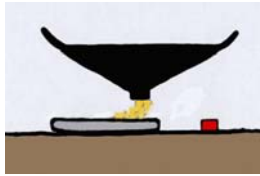
6. Repeat step 4, then 5, again and again, stratifying the gravel (sifting) then expelling the gravel until the gravel is level with the top of the mixing chamber, which is that bulbous shaped area just above the trap hole and plug.



7. Leave some water in your Pyramid Pro Pan®, then lift it up and give it quick shaking movements (forward, backward, side to side,) then swirl the gravel around to help sink the heavies into the trap.\*\*\*\* (See below.) At this time you may decide to fill your Pyramid Pan® again and keep panning (go back to 1.) or go on to 8.



8. After doing #7 enough to feel satisfied you did a good job, pour off the water, and reach down and loosen the trap plug. Pull out plug from the trap and empty concentrates into a container or finishing pan. Most, if not all of the heavy material will be there. At this time you can reinsert the plug (do not over-tighten, snug is enough,) and continue panning more gravel or throw some water into your Pyramid Pro Pan by dipping or with your hand and flush out the rest of the concentrates.



\* *It is a good idea to keep an extra plug in your supplies in case you get careless and lose one.*

\*\* *When first learning to use your Pyramid Pro Pan® it is best to fill the gravel up to the second riffle. Once you have practiced panning with the Pyramid Pro Pan® several times and feel more used to the technique, try a full load filled to just under the top riffle. If a full load is too heavy for you to handle, keep in mind that it isn't necessary to run a large amount of gravel until, if ever, you feel up to it. Just do what you can and in time you'll do more.*

\*\*\* *When performing the task of panning gravel, your shoulders, wrists, and hands should be relaxed with the elbows being placed in a comfortable position on your knees. Don't death-grip the handles on your Pyramid Pro Pan®. A full load of gravel is heavy so if you want to make it through the day, let the water help you support your Pyramid Pro Pan while working the gravel. Stay relaxed and enjoy what you're doing.*

\*\*\*\* *Keep in mind that your Pyramid Pro Pan® is a production pan so if you are on a good producing spot and are going for the maximum recovery, you can refill your Pyramid Pro Pan® all day long, then empty the concentrates at that time. On the other hand, if you are Prospecting or Assaying an area you may want to see your results immediately. In this case proceed to step 8.*

To see a video stream of the Pyramid Pro Pan® being used to recover gold, go to our web site: [www.fossickers.com](http://www.fossickers.com). Look under the Pyramid Pro Pan® page.

## Some Hints

The average time to finish a full Pyramid Pro Pan® filled with classified gravel is 4 to 10 minutes and for non-classified gravel it will be 2 to 6 minutes depending on the material being worked. A 5 gallon bucket of concentrates can be done in 8 to 20 minutes depending on use and material.

Before panning, always classify your gravel to the average size of the pay material in the area you are working. Sometimes when out prospecting, you don't have the time or equipment to properly classify your gravel. In this case you may shovel non-classified gravel directly into your Pyramid Pro Pan® and let it sort out the stones and gravel for you. With this method, first stratify your gravel then remove the larger stones by brushing the top surface with your hand and pushing them over the rim of your Pyramid Pro Pan®. When performing this move, keep an alert eye for possible large nuggets. Repeat this procedure until the large stones are gone. Now you can finish panning your gravel.

Pre-cleaning the gravel is very important for best results. This cannot be over emphasized. The riffles in your Pyramid Pro Pan® have been installed for just that purpose – to scrub and boil the gravel so that unwanted sticky debris like clay, slime and silt can be eliminated. Another advantage the riffles create is to break up hard-pack gravel, which in many instances holds a good portion of the fines and sometimes a nugget or two. In many areas you will find various clays and sticky colored silt in your gravels. It is recommended that you first stratify your gravel to bring this unwanted material to the surface suspended in the water. Expel this material by pouring the water over the top of the pan. Continue this procedure until the water appears clean. (The cleaner your gravels are the better your results will be.) Now continue to pan your gravel.

One last item to keep in mind – obey the local laws, fill your holes and pick up your garbage.

*Good luck fellow Fossicker!*